

# Instruction on Replacing the Sample Holder Support for Micro-Vibration Mill with Zirconia Beads MSK-SFM-12M-A



This appending document provides instruction to replace the sample holder support. The support is the crucial part for the mill to work as intended. Before proceeding, please prepare the following simple tools:

- Philips Screwdriver
- Hexagon Key
- Plier or Wrench
- Bird Beak Plier

The support is the white plastic part with metal tube holder. It connects to the vibration motor. The support is indicated in the red circle in two pictures below.



1. To take the support out, first remove the four plastic ends at the bottom of the mill, then remove the screws behind the plastic ends.

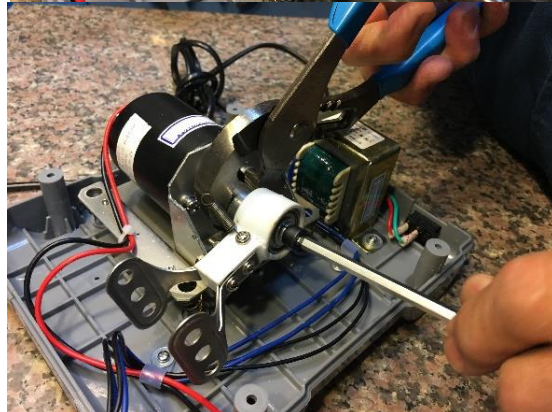
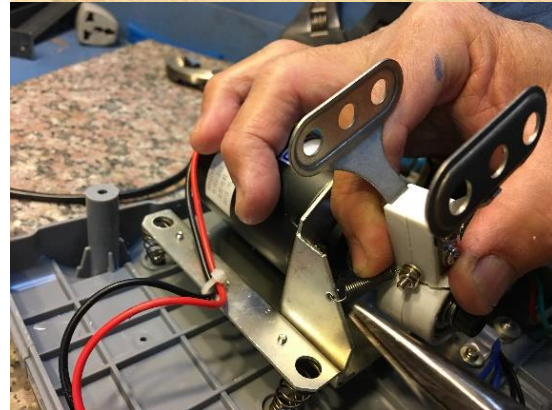
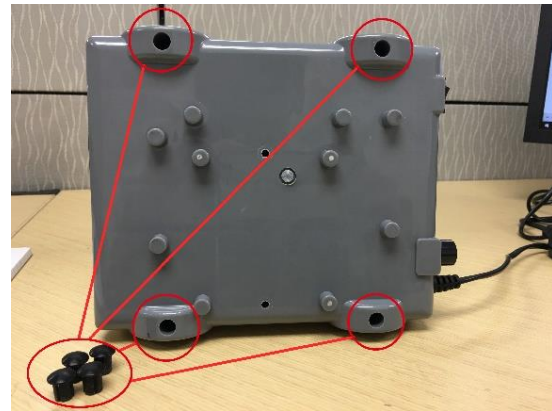
2. Turn the mill right side up. Remove the cover gently as there are wires connecting the base and the cover.

3. There are two springs on the left and right side of the support. They attach the support to the motor holder. Detach them using a bird beak plier.

4. Hold the motor rotor shaft with a wrench and take the screw off using hex key.

5. Now you can take the support out.

Attention: Pay attention on the orientation of parts taken out. There are no foolproof mechanism to prevent wrong reassembly. Operating the mill in wrong assembly may result damage.



Reassemble the mill in the following steps:

7. Put the new support and other parts back with the motor rotor shaft in correct orientation.
8. Hold the motor rotor shaft and tighten the parts to it with hex key.
9. Reattach the springs to the motor holder.
10. Close the cover, put the screws back and cover them with plastic ends.

