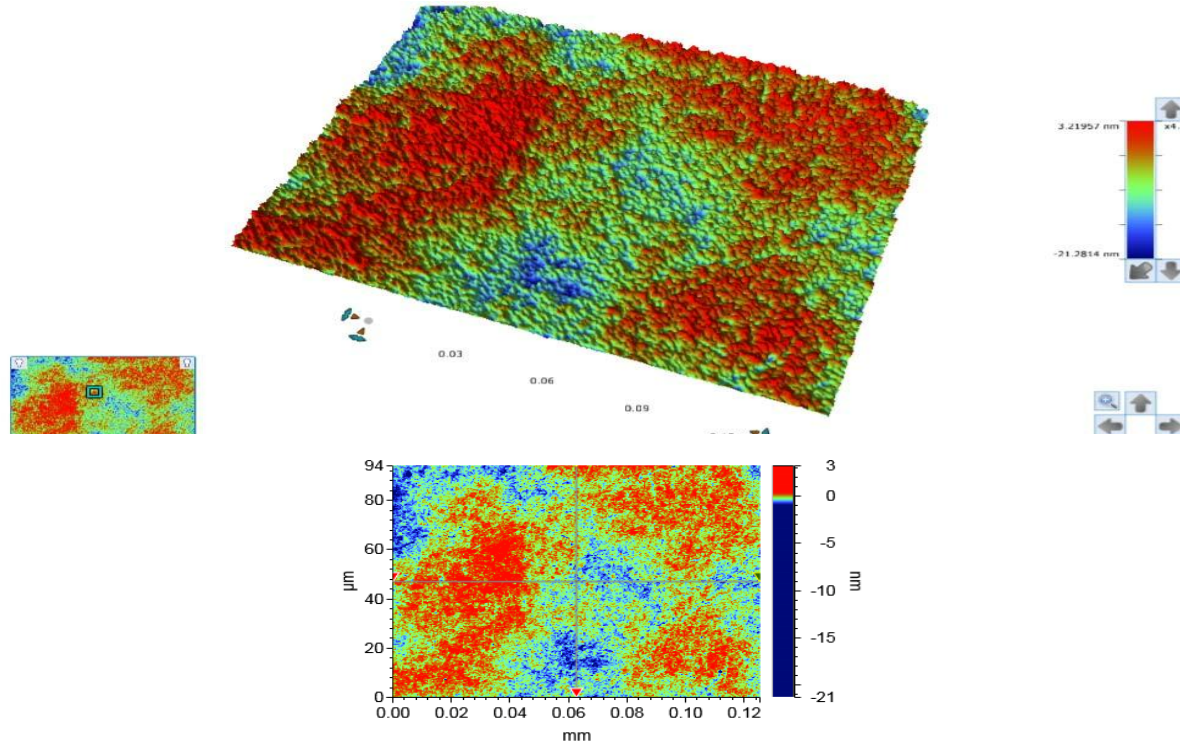


QUALITY TEST REPORTS

Orientation	Type	Dopant	Size (mm)	Thickness (μm)	Carrier Concentration	Mobility (cm^{-2})	EPD (cm^{-2})
$\langle 100 \rangle \pm 0.5^\circ$	N	Undoped	$(10 \times 10) \pm 0.4$	500 ± 25	$77\text{K} (1-10) \times 10^{13}$	> 40000	< 200



Analytical Results

Label	Value	Units
Average	0	nm
Data Points	307200	
Percent Data Points	100	%
Ra	0.245	nm
Rp	3.22	nm
Rq	0.325	nm
Rt	24.501	nm
Rv	-21.281	nm

Analytical Results

Label	Value	Units
Average	0	nm
Data Points	307200	
Percent Data Points	100	%
Ra	0.245	nm
Rp	3.22	nm
Rq	0.325	nm
Rt	24.501	nm
Rv	-21.281	nm

