


## TECHNICAL SPECIFICATIONS FOR ANTISTATIC BUTADYL® GLOVE

	TYPE	DESCRIPTION
	MATERIAL	BUTADYL®
	COLOR	WHITE
	MODEL	EQ-GB-G624-LD
	HAND STYLE	AMBIDEXTROUS
	THICKNESS	15mil
	LENGTH	24 INCHES
	BEAD	0.25 INCH
	MARKING	MTI Corporation

### **BUTADYL® CHARACTERISTICS**

BUTADYL® IS A COST EFFECTIVE ALTERNATIVE TO HYPALON®, NEOPRENE OR BUTYL IN MANY APPLICATIONS. IT PERFORMS WELL IN SITUATIONS IN WHICH VAPORIZED HYDROGEN PEROXIDE (VHP) IS INVOLVED. IT ALSO OFFERS STRONG RESISTANCE TO PARTICULARLY HARMFUL AGENTS, SUCH AS: AROMATIC HYDROCARBONS, PETROLEUM SOLVENTS, AND LIPIDS. IT IS AN IDEAL MATERIAL THAT MAINTAINS CONSISTANCY WHEN FACED WITH PRESENCE OF OZONE OR SUN, AND IS NOT PRONE TO INDUCE ALLERGIC REACTIONS.

**PERMEATION TEST RESULTS ON WHITE BUTADYL® GLOVES: ASTM F 739-99A**

TEST CHEMICAL	BREAKTHROUGH DETECTION TIME	PERMEATED MASS/UNIT AREA AT BREAKTHROUGH	STEADY STATE PERMEATION RATE
	MINUTES	(AVG.), UG/CM <sup>2</sup>	(AVG.), UG/CM <sup>2</sup> /MIN
ACETONE 99.5%	58 MINUTES	1097.9	814.0
ACETONITRILE 99.8%	21 MINUTES	514.3	2751.20
METHYL ALCOHOL (METHANOL) 99.84%	90 MINUTES	586.60	412.7
SULPHURIC ACID 37%	NO BREAKTHROUGH WAS DETECTED UP TO 240 MINUTES	-0-	-0-
AMMONIUM HYDROXIDE 30%	NO BREAKTHROUGH WAS DETECTED UP TO 240 MINUTES	-0-	-0-
HYDROFLUORIC ACID 51%	NO BREAKTHROUGH WAS DETECTED UP TO 240 MINUTES	-0-	-0-
ANILINE 100%	120 MINUTES	123.8	N/A

**PHYSICAL PROPERTIES**

WHITE BUTADYL GLOVES	
ULTIMATE ELONGATION, %	417
100% MODULUS, PSI	633
200% MODULUS, PSI	1067
300% MODULUS, PSI	1704
TENSILE STRENGTH, PSI	3848

**GAS PERMIABILITY**

	GAS (REFERENCE)	AIR	HYDROGEN	NITROGEN	OXYGEN	HELIUM
BUTADYL®		2.1	69.674	17.204	9.10	72.028

**PERMEATION TEST RESULTS FOR CYTOTOXIC DRUGS, 4 HOUR DURATION**

TEST CHEMICAL	BREAKTHROUGH DETECTION TIME	STEADY STATE PERMEATION RATE	OTHER OBSERVATIONS
	Minutes	(Avg) Ug/cm <sup>2</sup> /min	
DACARBAZINE 10.0 MG/ML (10,000 PPM)	NO BREATHROUGH UP TO 240 MINUTES	0	NO SWELLING, NO DEGRADATION
CARMUSTINE (BiCNU) 3.3 MG/ML (3,300 PPM)	NO BREATHROUGH UP TO 240 MINUTES	0	NO SWELLING, NO DEGRADATION
CYCLOPHOSPHAMIDE (CYTOXAN) 20.0 MG/ML (20,000 PPM)	NO BREATHROUGH UP TO 240 MINUTES	0	NO SWELLING, NO DEGRADATION
DOXORUBICIN HYDROCHLORIDE 2.0 MG/ML (2,000 PPM)	NO BREATHROUGH UP TO 240 MINUTES	0	NO SWELLING, NO DEGRADATION
5-FLUOROURACIL 50.0 MG/ML (50,000 PPM)	NO BREATHROUGH UP TO 240 MINUTES	0	NO SWELLING, NO DEGRADATION
CISPLATIN 1.0 MG/ML (1,000 PPM)	NO BREATHROUGH UP TO 240 MINUTES	0	NO SWELLING, NO DEGRADATION
ETOPOSIDE (TOPOSAR) 20.0 MG/ML (20,000 PPM)	NO BREATHROUGH UP TO 240 MINUTES	0	NO SWELLING, NO DEGRADATION
PACLITAXEL (TAXOL) 6.0 MG/ML (6,000 PPM)	NO BREATHROUGH UP TO 240 MINUTES	0	NO SWELLING, NO DEGRADATION
THIO-TEPA 10.0 MG/ML (10,000 PPM)	NO BREATHROUGH UP TO 240 MINUTES	0	NO SWELLING, NO DEGRADATION

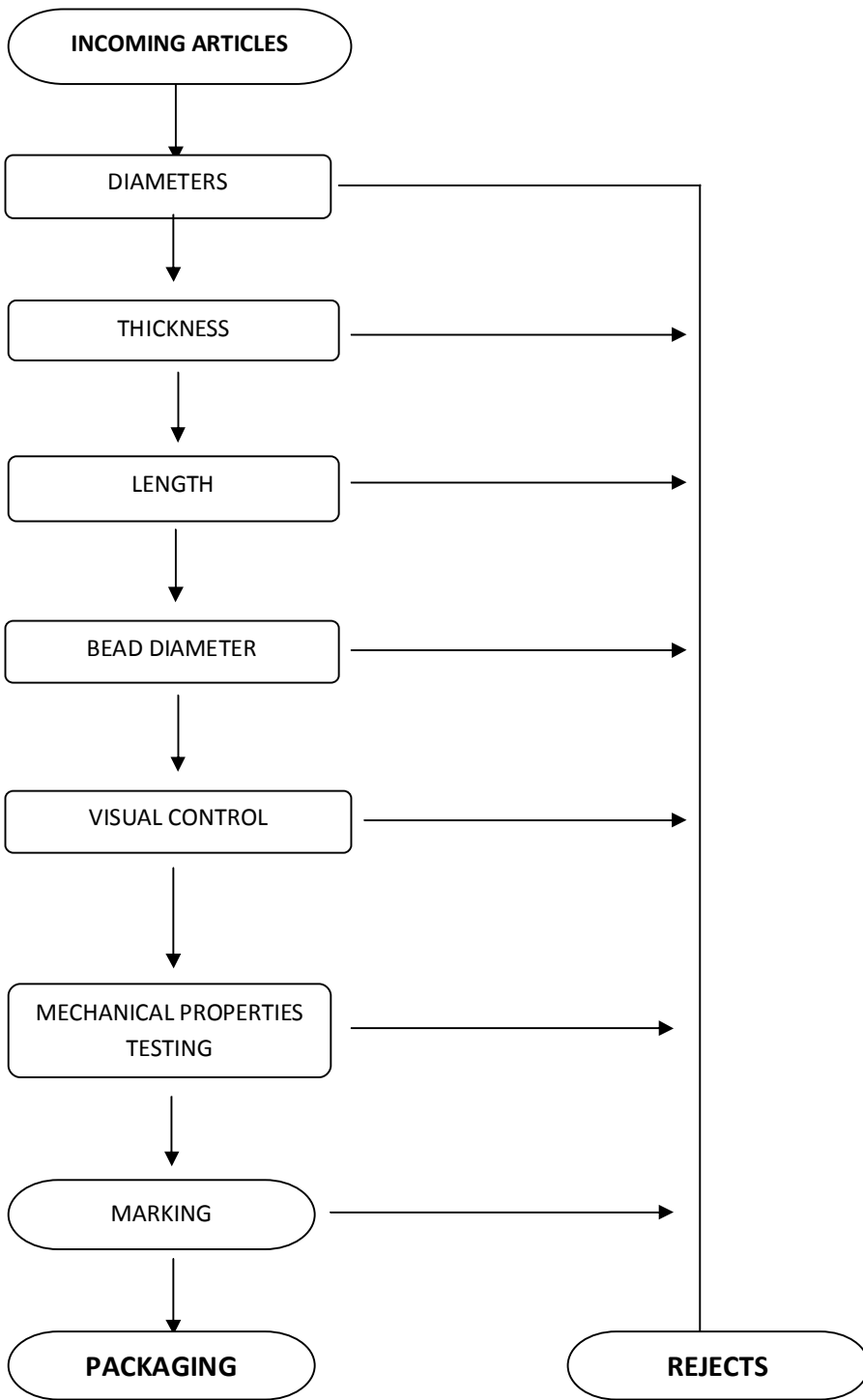
**PERMEATION TEST RESULTS FOR CYTOTOXIC DRUGS, 8 HOUR DURATION**

TEST CHEMICAL	BREAKTHROUGH DETECTION TIME	STEADY STATE PERMEATION RATE	OTHER OBSERVATIONS
	Minutes	(Avg) Ug/cm <sup>2</sup> /min	
CYCLOPHOSPHAMIDE (CYTOXAN) 20.0 MG/ML (20,000 PPM)	NO BREAKTHROUGH UP TO 480 MINUTES	0	NO SWELLING, NO DEGRADATION
DOXORUBICIN HYDROCHLORIDE 2.0 MG/ML (2,000 PPM)	NO BREAKTHROUGH UP TO 480 MINUTES	0	NO SWELLING, NO DEGRADATION
5-FLUOROURACIL 50.0 MG/ML (50,000 PPM)	NO BREAKTHROUGH UP TO 480 MINUTES	0	NO SWELLING, NO DEGRADATION
METHOTREXATE 25.0 MG/ML (25,000 PPM)	NO BREAKTHROUGH UP TO 480 MINUTES	0	NO SWELLING, NO DEGRADATION
VINCRIStINE SULFATE 1.0 MG/ML (2,000 PPM)	NO BREAKTHROUGH UP TO 480 MINUTES	0	NO SWELLING, NO DEGRADATION
DAUNORUBICIN HYDROCHLORIDE 5.0 MG/ML (5,000 PPM)	NO BREAKTHROUGH UP TO 480 MINUTES	0	NO SWELLING, NO DEGRADATION

**PERMEATION RESULTS FOR VAPORIZED HYDROGEN PEROXIDE (VHP)**

CHEMICAL TESTED	TIME INTERVAL	AVERAGE BREAKTHROUGH DETECTION TIME (SPECIMEN 1/2/3) Minutes	AVERAGE STEADY STATE PERM. RATE (SPECIMEN 1/2/3) (µg/cm <sup>2</sup> /minutes)	COMMENTS
HYDROGEN PEROXIDE, 35%				
	1 HOUR	NO BREAKTHROUGH	N/A	NO SWELLING, DEGRADATION, OR SWELLING
	5 HOURS	NO BREAKTHROUGH	N/A	NO SWELLING, DEGRADATION, OR SWELLING
	10 HOURS	NO BREAKTHROUGH	N/A	NO SWELLING, DEGRADATION, OR SWELLING
	20 HOURS	NO BREATHROUGH	N/A	NO SWELLING, DEGRADATION, OR SWELLING

**QUALITY CONTROL INSPECTION FLOW CHART**



## **USAGE RECOMMENDATIONS**

### **THIS GLOVE IS PARTICULARLY RECOMMENDED FOR:**

- SODIUM HYDROXIDE 50%
- NITRIC ACID 10%
- POTASSIUM HYDROXIDE 50%
- PERCHLORIC ACID 60%

### **IT IS ALSO SUITABLE FOR HANDLING CHEMICAL PRODUCTS LIKE:**

- ALCOHOLS
- MINERAL SPIRITS
- PENTANE, KEROSENE
- EDIBLE OILS AND ACIDS

### **THIS GLOVE IS NOT SUITABLE FOR HANDLING:**

- KETONIC SOLVENTS (i.e. METHYL ETHYL KETONE)
- PLASTICISERS (i.e. PROPYLENE OXIDE)
- CHLORINATED SOLVENTS (i.e. METHYLENE CHLORIDE)
- AROMATIC SOLVENTS (i.e. XYLENE, STYRENE)
- PHENOL 90%

## **STORAGE AND MAINTENANCE**

- BUTADYL GLOVES ARE PACKAGED FULLY EXTENDED, INDIVIDUALLY WRAPPED IN A POLYETHYLENE BAG.
- AFTER HANDLING, PLEASE REMOVE CHEMICAL RESIDUE FROM GLOVES WITH SOAPY WATER.
- BUTADYL GLOVES MUST BE RETURNED TO A POLYETHYLENE BAG AND STORED AT ROOM TEMPERATURE TO AVOID ALL RISKS OF DETERIORATION AND DAMAGE.