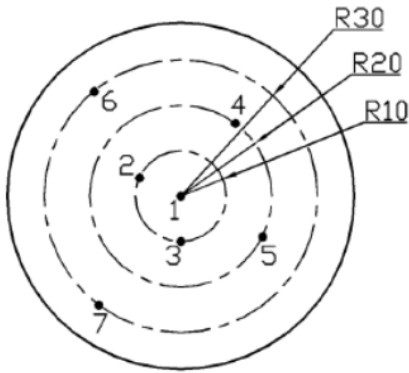


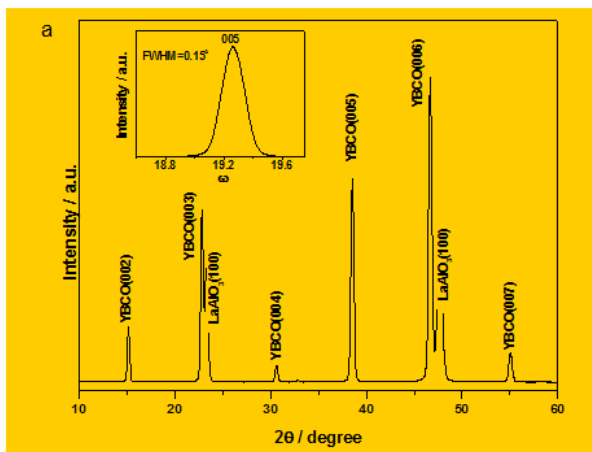
## Homogeneous T<sub>c</sub> distribution



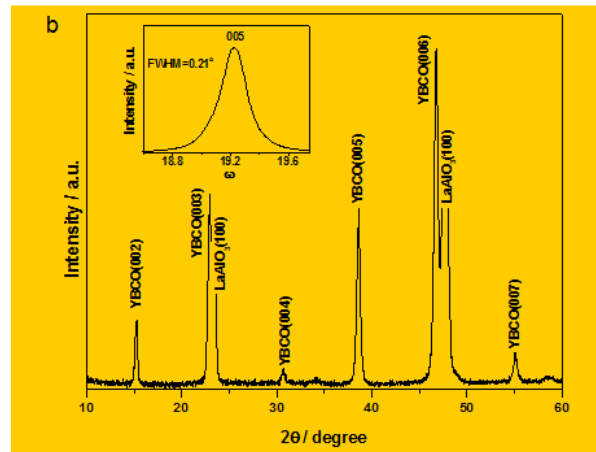
Test point	$T_{C0}$ (K)	$\Delta T_C$ (K)
1	90.1	0.35
2	90.2	0.32
3	90.1	0.40
4	90.0	0.45
5	90.1	0.40
6	89.8	0.43
7	89.9	0.47

Measured with inductive coil with 5 mm in diameter

## XRD results of 3 inch sample

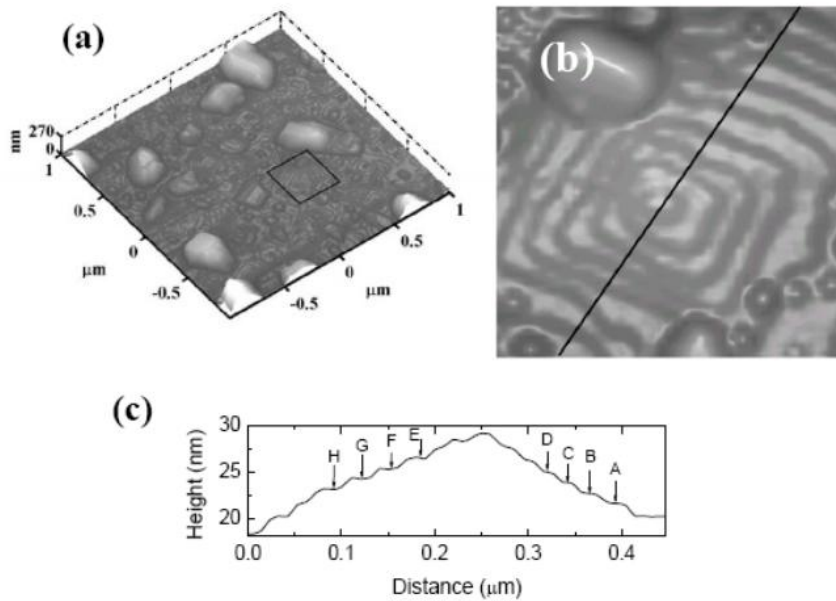


center



edge

## Surface structure of YBCO films



**AFM images, the heights of the designated steps are given: A-B, 1.136nm; B-C, 1.172nm; C-D, 1.131nm; E-F, 1.1609nm; F-G, 1.142nm; G-H, 1.164nm.**